



ANNUAL REPORT

2019



TRANSFORMING FOSTER CARE

West Michigan Partnership for Children (WMPC) is funded by the Michigan Department of Health and Human Services (MDHHS) to pilot a performance-based foster care model in Kent County, Michigan. This pilot is a data-driven, innovative, performance-based approach to administering foster care that will transform child welfare and create better futures for children.

WMPC oversees the placement, care, and outcomes for approximately 800 children in foster care on any given day through subcontracts with five private child placing agencies:

- Bethany Christian Services
- Catholic Charities West Michigan
- D.A. Blodgett- St. John's
- Samaritas
- Wellspring Lutheran Services

WMPC IMPLEMENTS SANCTUARY MODEL

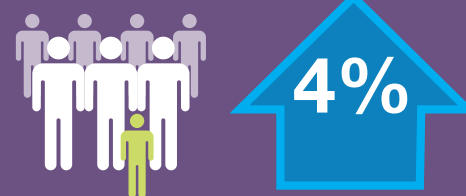


WMPC identified the need for a unifying trauma-informed framework to help administrators in the child and family service system develop a shared understanding of trauma and integrate trauma-responsive policies and practices into their respective organizations. WMPC received grant funding through the Michigan Health Endowment Fund to support implementation of these goals, and in 2019, began planning for its system-wide launch of the Sanctuary Model. The Sanctuary Model is a trauma-informed model that provides a blueprint for clinical and organizational change which, at its core, promotes safety and recovery from adversity through the active creation of a trauma-informed community.

1279 children and youth served in foster care and adoption



444 Kent County children exited foster care



WMPC relative/community placements



Time children spent in residential care

REUNIFICATION DAY

WMPC, in collaboration with Michigan Department of Health and Human Services (MDHHS) was honored to host Kent County's first annual Family Reunification Day on June 10th, 2019. We believe that all children need care, love, security and stability; reunification with families is the best option for a permanent loving home when safe and appropriate. Michigan Supreme Court Justice Megan Cavanagh led with an inspiring keynote highlighting the importance of family preservation. The day celebrated the resiliency of families who have successfully reunified, and honored those who supported and walked along these families toward reunification.

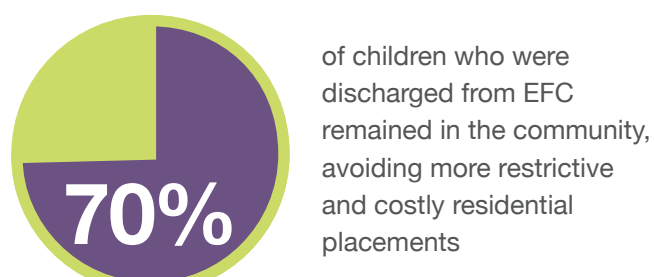
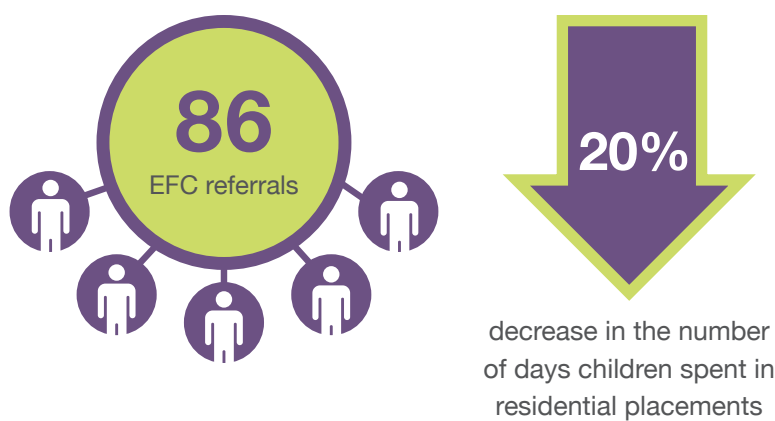
5% spent on administration

95% spent on foster care services



ENHANCED FOSTER CARE

WMPC launched a new service, Enhanced Foster Care (EFC), in January 2018. EFC was designed to provide an intensive community-based approach by stabilizing current youth in foster care, diverting youth from being placed out of the community, and deliberately returning youth from residential care back to the community.



WMPC FINANCES

WMPC passes through 95% of the funds received from its contract with MDHHS to its subcontractors who are providing direct services for children and families experiencing the foster care system. WMPC retains 5% for its administrative costs, which include contract administration, serving as the fiduciary agent, and providing care coordination and continuous quality improvement over the county-wide foster care system.