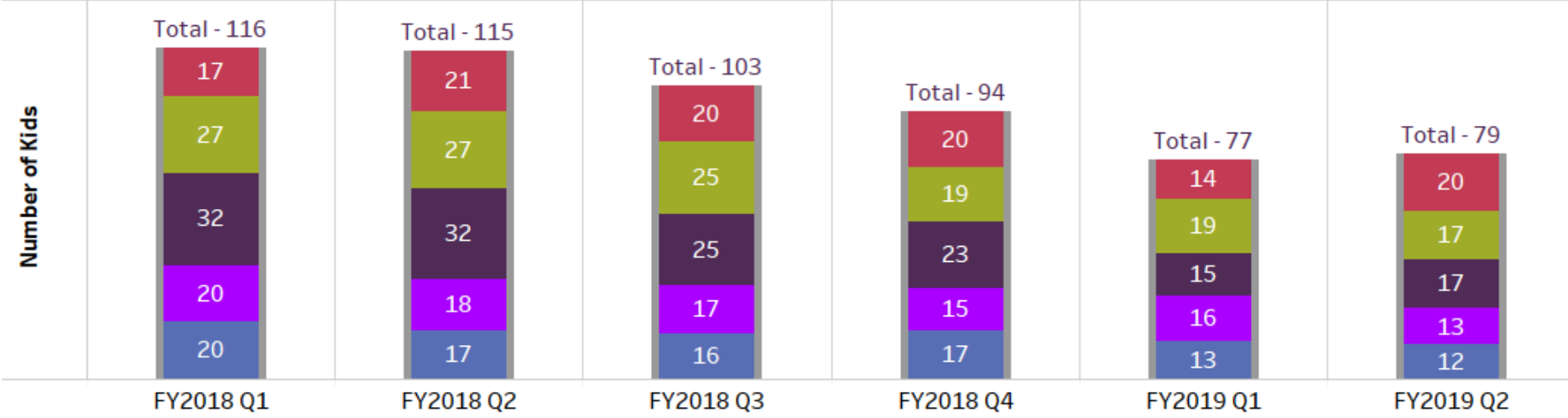
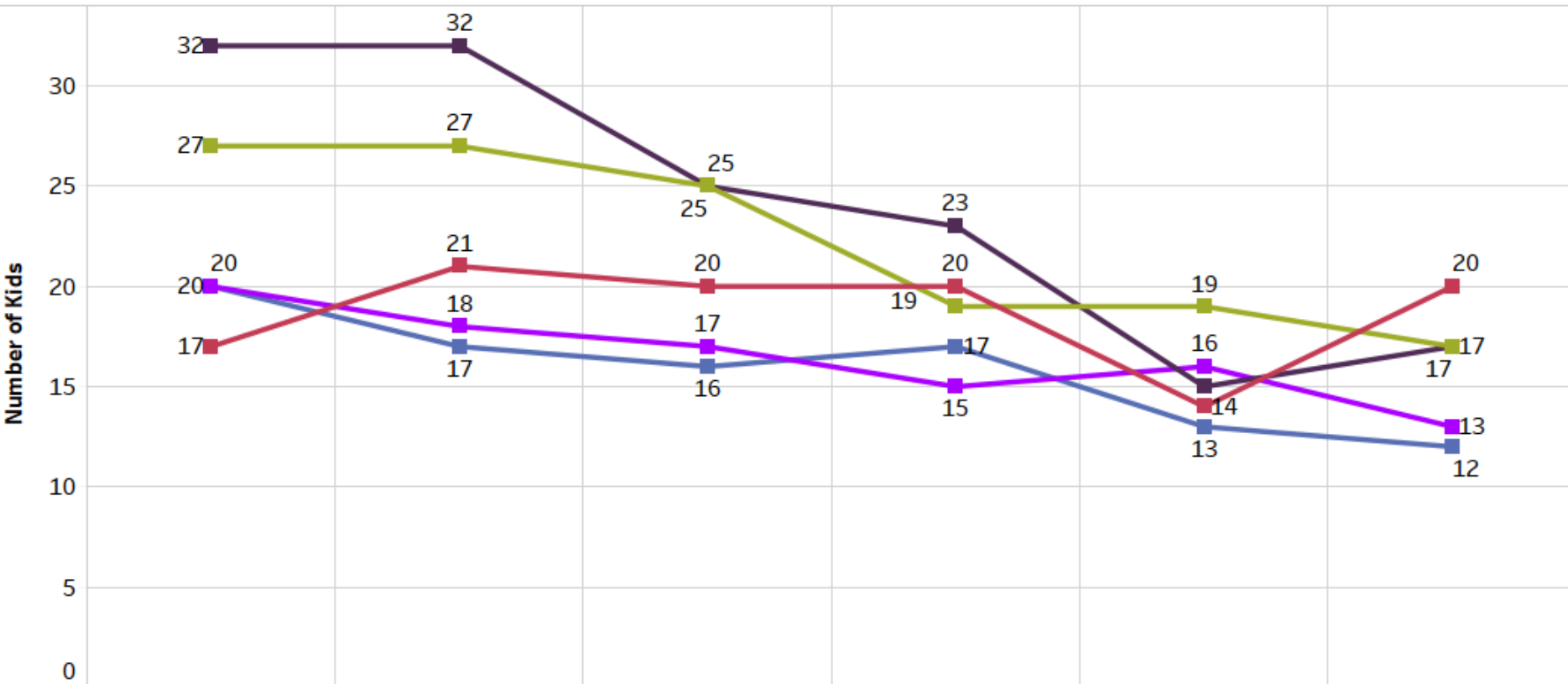


Judge's Quarterly
Management Review
August 7th, 2019

Foster Home Analysis

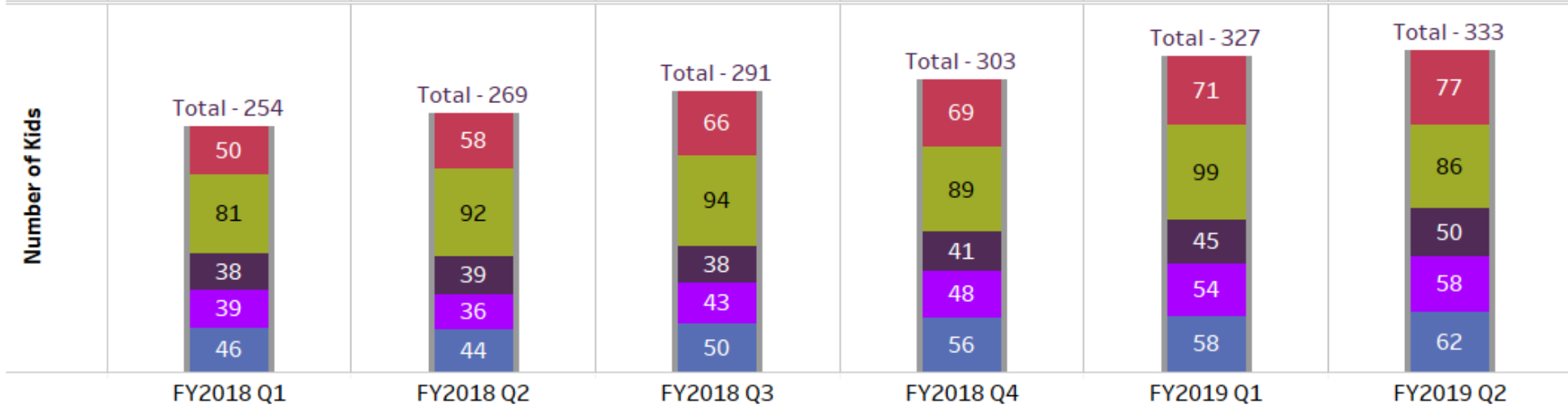
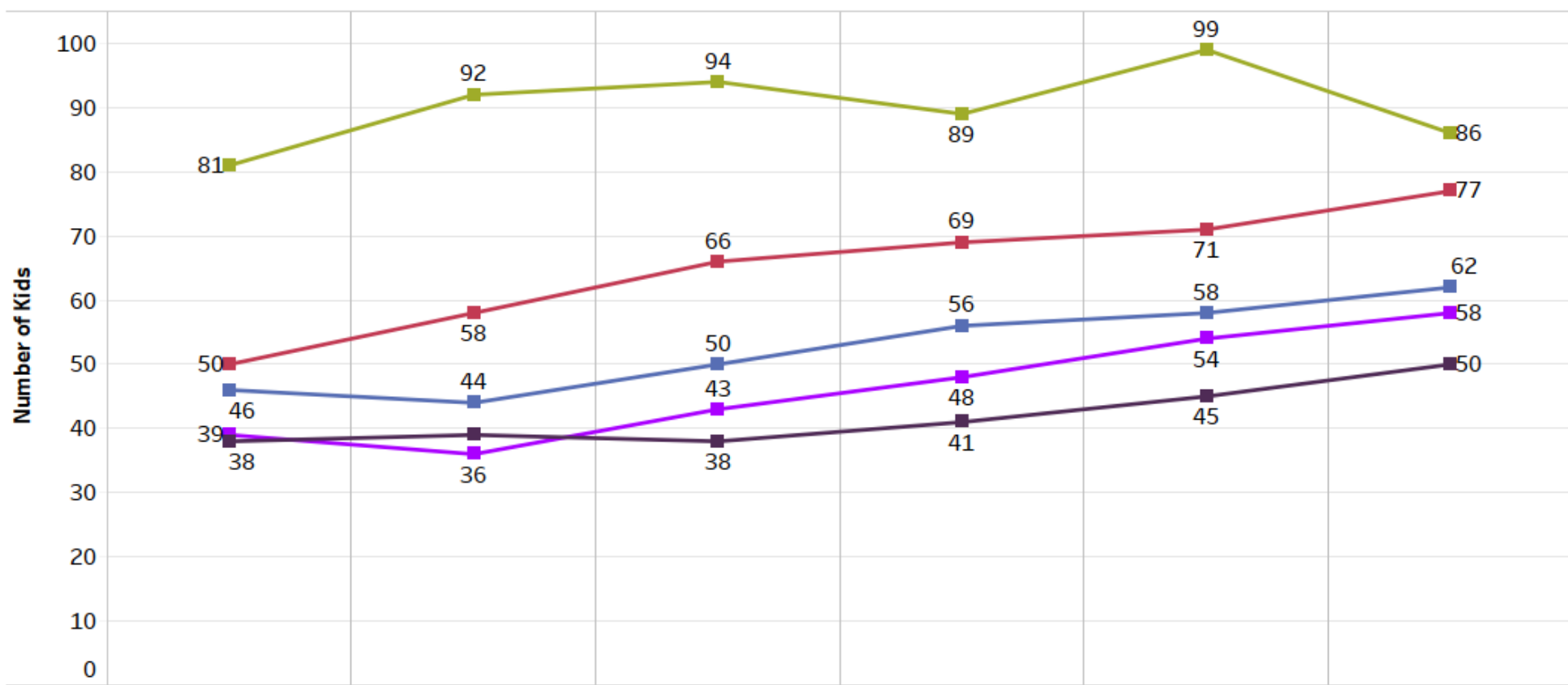
Residential use by agency (FY2018 - FY2019)

- Agency
- Bethany Christian Services Inc-Grand Rapids
 - Catholic Charities West Michigan - GR
 - Da Blodgett For Children
 - Samaritas - West
 - Wellspring Lutheran Services Kentwood



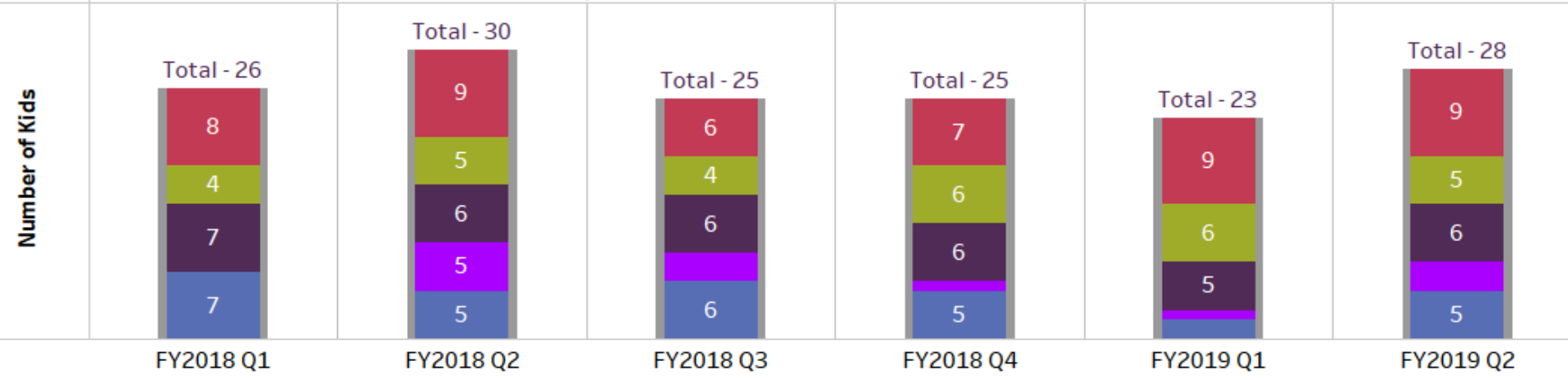
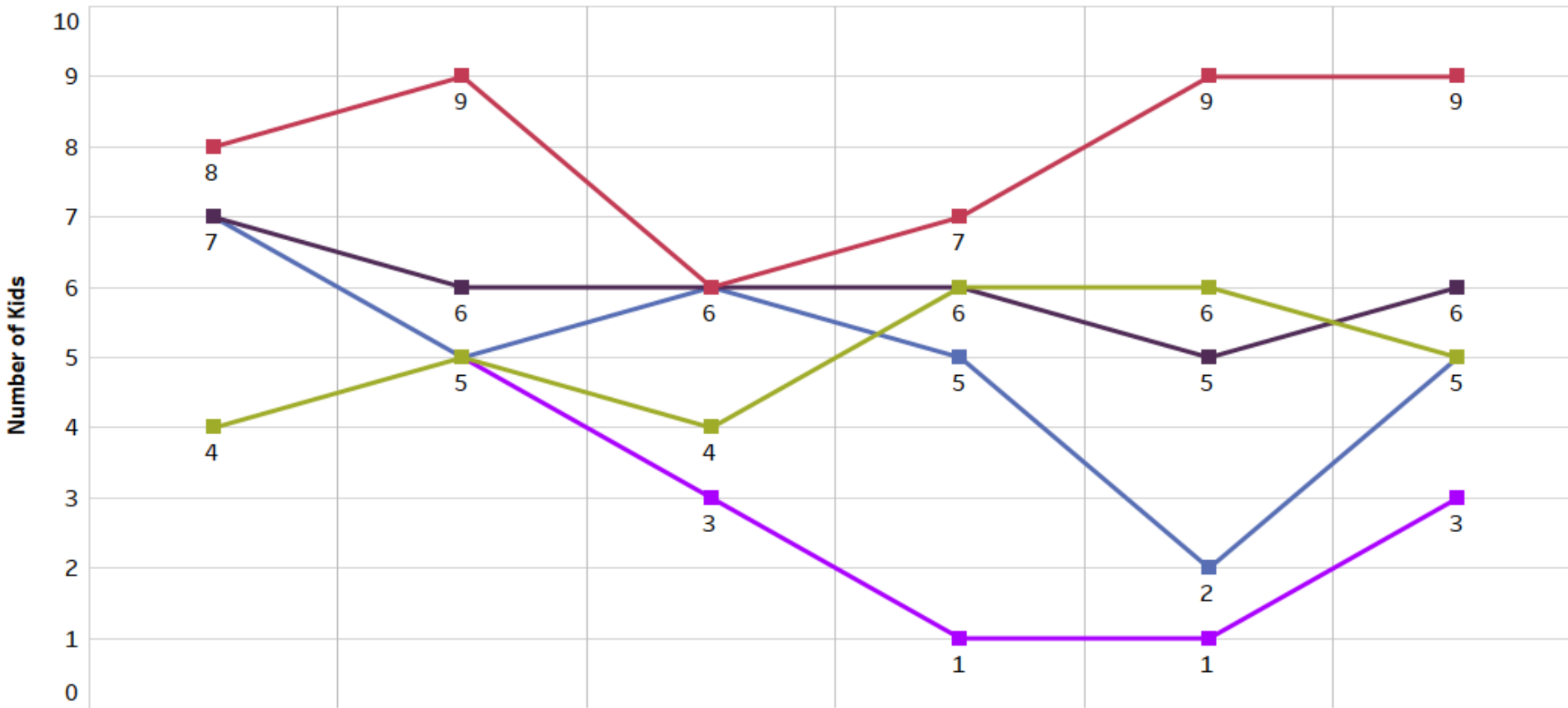
Relative Home use by agency (FY2018 - FY2019)

- Agency Name**
- Bethany Christian Services Inc-Grand Rapids
 - Catholic Charities West Michigan - GR
 - Da Blodgett For Children
 - Samaritas - West
 - Wellspring Lutheran Services Kentwood



Shelter usage by agency (FY2018 - FY2019)

- Agency**
- Bethany Christian Services Inc-Grand Rapids
 - Catholic Charities West Michigan - GR
 - Da Blodgett For Children
 - Samaritas - West
 - Wellspring Lutheran Services Kentwood



Number of licensed foster homes in high removal zip codes (as of 10/1/17 and at 6/25/19)

